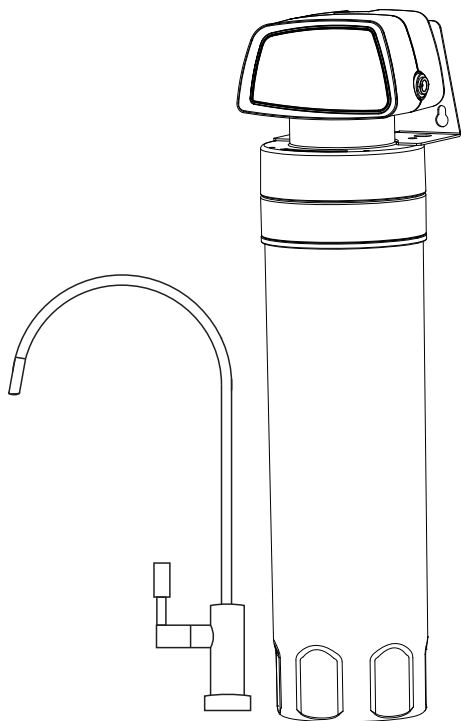


# **Mono Pure Water Filter**

---

## **Instruction Manual**



Read through all the instructions before installing and using the unit.

## CONTENTS

Functions .....	1
Filter Cartridges Introduction .....	1
Spare Parts Name .....	1
Technical Parameter .....	2
Installation & Testing .....	2
Machine Installation .....	2
Inlet water spare parts Installation .....	2
Faucet Installation .....	3
Tubing Connection .....	3
Operation Methods .....	4
Maintenance .....	4
Cartridges Replacement .....	4
Notice Items .....	5
Special Reminder .....	5
Packing List .....	5
Common Fault Analysis .....	5

## Functions

Multi-filtration, effectively remove the chlorine, heavy metal, sediment, rust, bacteria, colloid, algae, macromolecular organic matter and other harmful substances, and keep the beneficial minerals and trace elements in the water, purified water is drinkable.

Filter cartridge uses our own patented technology, fast and easy, can effectively guarantee the pre-treatment, easy to replace, with low operating cost.

### ◎ Filter Cartridges Introduction

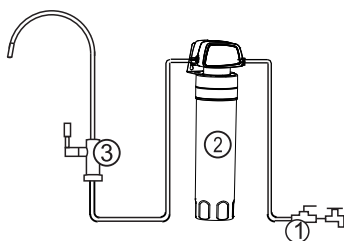
- **Acid-washed coconut carbon:** Performance is better than ordinary carbon, Reduce the breeding of germs, effectively remove odor, different color, residual chlorine, absorb organic matter and bacteria in water.

- **Calcium sulfite ball:** Antibacterial, High efficiency, Safe, High temperature resistance, Can adjust the PH value of water, Make water alkaline.

- **KDF:** High purity copper alloy, and can be perfect to remove the heavy metals and acid radical ion in the water.

- **UF Membrane:** Effectively intercept the harmful substances such as bacteria, escherichia coli, colloidal suspensions in water.

## Spare Parts Name



1. Tee Fitting
2. Water Filter
3. Faucet

## Technical Parameter

**Source water temperature :** 5 ~ 38 °C

**Suitable Ambient temperature:** 5 ~ 45 °C

**Suitable inlet pressure:** 0.1-0.4MPA

**Max. Pure Water Flow:** about 2.5L/min

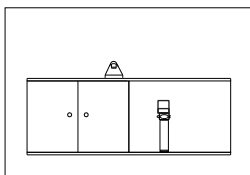
**Filter Elements Rated Capacity :** about 3000L

**Water Source:** City water

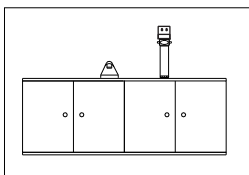
## Installation & Testing

### Machine Installation

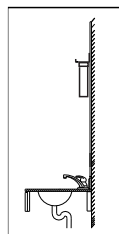
Installation Method is according to actual situation of your kitchen. If the machine hung on the wall, you should use two M5 expansion screw or cement nail on the wall according with the bracket.



Place In The Cabinets



Place On The Cabinets

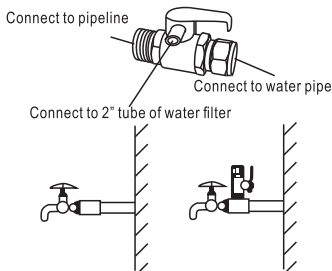


Hang On The Wall

### Inlet water spare parts Installation

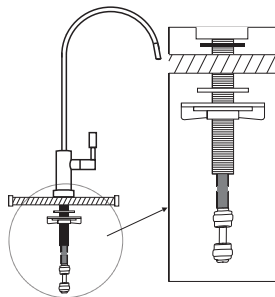
- Close the source water valve, dismantle the water tap.
- Install the inlet water ball valve to pipeline, and then connect the water tap to Tee fitting, connect the ball valve and filter with 2" tube.

#### Tee-Fitting Installation



## ◎ Faucet Installation

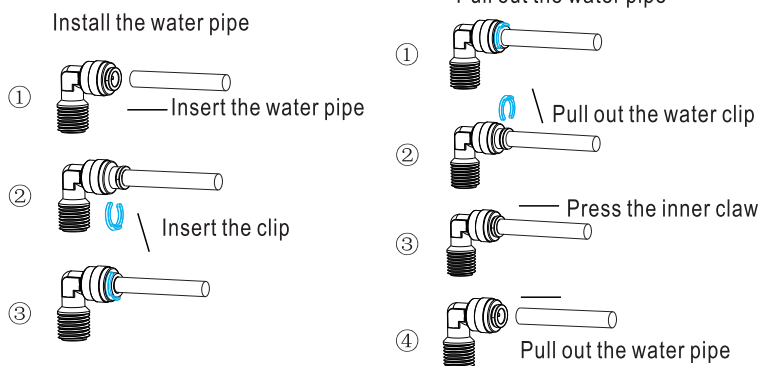
- 💧 Select a convenient location near your sink to place the faucet.
- 💧 Drill a hole 12mm in diameter in counter top.
- 💧 Place washers, plates, seals and nuts in order as per diagram and tighten on to counter.
- 💧 Attach 2" Water tubing to the bottom of faucet and connect tubing to unit.
- 💧 Install faucet at desired location according to diagram, depending on your faucet will follow either the left or right side of the diagram.



## ◎ Tubing Connection

Refer to the following diagram for how to properly install the Quick fittings.

### Quick fitting



- Attention: 1. Pay attention to the inlet water direction of filter, connect in right way.  
2. Tighten the fitting, to avoid the water leakage.

## Operation Methods

After installation and testing, you can use the water filter. Normally, you should close the goose faucet, when you need the pure water, just open the goose faucet, pure water flow out.

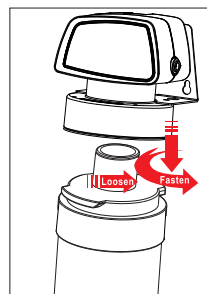
## Maintenance

Replace the filter cartridge regularly, keep water clean, at the same time to ensure that the product water quality reach the standard. On the basis of water of periodic replacement of filter cartridge is depending on source water quality and contained impurity quantity, or depending on user's experience. According to the experience of statistics, a family of three people, daily use pure water is about 10 liter (10 kg). Source water is municipal tap water, it is suggested to replace the filter cartridge about 12-18 months.

Cartridge change time is according to the user's source water quality and water usage, if change at suitable replacement frequency, can guarantee the normal operation of the water filter and pure water quality. Therefore, the above cartridge change cycle is for reference only.

### ◎ Cartridges Replacement

- ❖ Close ball valve, press the water outlet button
- ❖ After no water flow out, rotate the cartridge need to change clockwise, take away from the cap.
- ❖ Put the new cartridge under the cap, make it in the center line, then push it into the cap.
- ❖ Rotate the cartridge need to change Counterclockwise.
- ❖ Before drinking, flush the new cartridge for 10 minutes.



Change Filters in Seconds,  
No Tools required!

### ◎ Notice Items

- 💧 Flush and replace the cartridges Regularly  
Don't remove the spare parts of the machine by yourself, in order to avoid the water leakage and machine damage.
- 💧 If you don't use the machine for long time, when you use it again, please operate it as the first time use.
- 💧 If you don't use the machine for long time, please close the ball valve.
- 💧 Be careful when Loading and unloading, Carrying, and installing.

### ◎ Special Reminder

- 💧 After last use in the night or nobody in the house at daytime, please close the inlet water valve, in order to avoid the leakage because of "water hammer". Otherwise, our company doesn't take any responsibility.
- 💧 When the system has some problem, please cut off the source water, notify the dealer to solve the problem.
- 💧 Please do not replace the cartridge by yourself; it should be replaced by technical person.
- 💧 If necessary, you can inform the dealer to appoint technical person to disinfect the filter system.

### Packing List

- |                                  |                            |
|----------------------------------|----------------------------|
| 1). Water Filter, 1 set          | 2).goose faucet, 1pc       |
| 3). White PE Tube, 1pc (3 Meter) | 4).Instruction manual, 1pc |
| 5). Spare parts , 1 set          |                            |

### Common Fault Analysis

Fault	Cause	Solution
Not producing water	cartridge clogging	Replace the cartridge
	Inlet water Valve is closed	Open the inlet water valve
	Running Water is closed	Open the running water

*Good water, Diamond life*

